



INJURY SURVEILLANCE IN THE NORTH WEST OF ENGLAND

WEST CUMBERLAND HOSPITAL EMERGENCY DEPARTMENT

MONTHLY BULLETIN: OCTOBER 2013 TO SEPTEMBER 2014

This bulletin provides a breakdown of all injury attendances to West Cumberland Hospital Emergency Department (ED) between October 2013 and September 2014.

During this twelve month period there were 13,232 injury attendances. The month with the highest number of attendances, calculated as a daily average, was May 2014 (41 per day), compared to November 2013, the month with the fewest (30 per day each; **Figure 1**).

There were more males than females attending the ED in this period (males=7,036; 53%; **Figure 1**). Just under one-third (32%) were aged between 30 and 59 years (n=4,235), followed by 27% aged between 15 and 29 years (n=3,515) and 21% aged 60 years and above (n=2,755; **Figure 2**).

Table 1 shows the injury group of attendances between October 2013 and September 2014. Three-quarters (75%) of attendances were categorised as 'other' injury (n=9,930). Sports injury accounted for 11% of attendances (n=1,456) and 6% were due to road traffic collisions (n=782). Furthermore, deliberate self-harm accounted for 5% of attendances (n=630) followed by 3% due to assaults (n=434).

The referral source to the ED is detailed in **Table 2**. Under two-thirds (64%) self-referred (n=8,518) while under one in five (18%) were referred by the emergency services (n=2,329) and 7% were referred by a general medical practitioner (n=961).

Table 3 illustrates the incident location. Over two in five (44%) incidents occurred in the home (n=5,836),

while a similar proportion (43%) were recorded as 'other' location (n=5,662).

The discharge destination for ED attendances is displayed in **Table 4**. Over half (55%) were discharged from hospital with no follow-up treatment required (n=7,231). Fifteen per cent were referred to an outpatient clinic (n=1,965) and 13% were admitted to hospital (n=1,738).

Assault attendances

Between October 2013 and September 2014 there were 434 assault-related injury attendances to West Cumberland Hospital ED.

The majority (69%) of attendees presenting to the ED with assault-related injuries were male (n=298; **Figure 3**). Over half (53%) were aged between 15 and 29 years (n=230) while 40% were aged between 30 and 59 years (n=173; **Table 5**).

The assault location is shown in **Table 6**. Almost seven-in-ten (68%) incidents were recorded as occurring in 'other' location (n=294). Fifteen per cent of assaults occurred in the home (n=66) while 12% occurred in a public place (n=51).

Table 7 illustrates the disposal method of assault attendances. Over three in five (64%) were discharged from hospital with no follow-up treatment required (n=276), while over one in five (22%) required follow-up treatment (n=94) followed by 7% who were admitted to hospital (n=29).

Figure 1: ED injury attendances by gender and month, October 2013 to September 2014

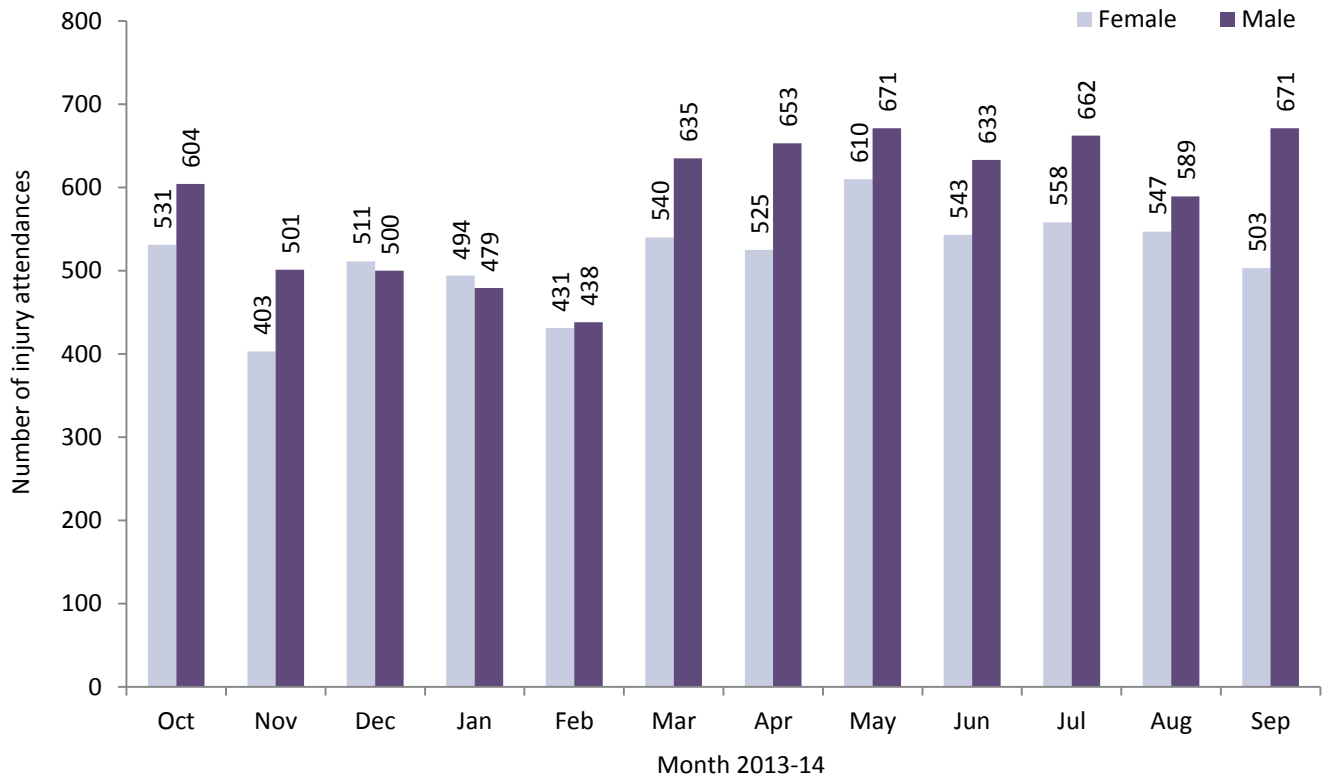


Figure 2: ED injury attendances by age group and month, October 2013 to September 2014

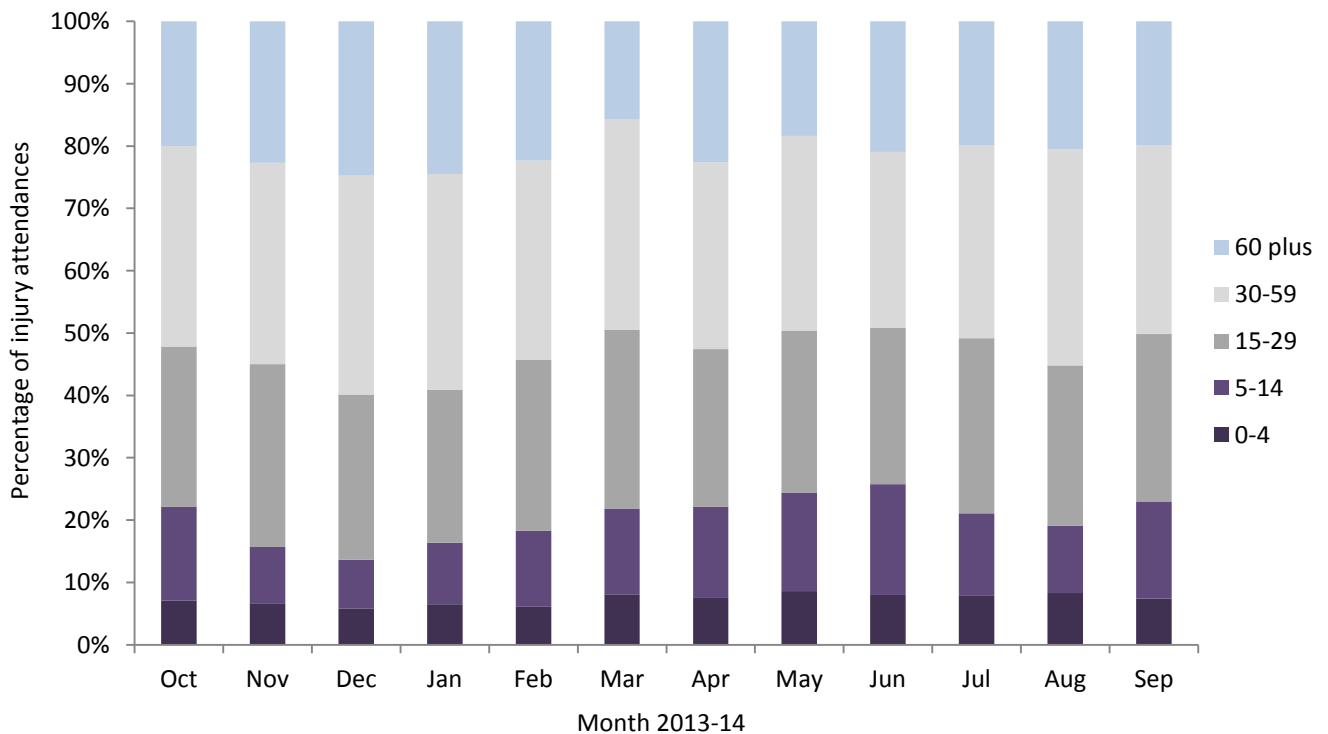


Table 1: ED injury attendances by injury group and month, October 2013 to September 2014

Injury group	Oct	Nov	Dec	Jan	Feb	Mar	Apr	May	Jun	Jul	Aug	Sep	Total	%
Other injury	854	650	803	730	637	874	870	965	902	933	855	857	9930	75%
Sports injury	148	85	72	71	103	151	158	150	129	114	116	159	1456	11%
Road traffic collision	55	78	43	75	52	73	62	62	64	79	66	73	782	6%
Deliberate self-harm	45	49	60	58	42	42	52	65	46	65	63	43	630	5%
Assault	33	42	33	39	35	35	36	39	35	29	36	42	434	3%
Total	1135	904	1011	973	869	1175	1178	1281	1176	1220	1136	1174	13232	100%

Table 2: ED injury attendances by referral source and month, October 2013 to September 2014^{1,2}

Referral source	Oct	Nov	Dec	Jan	Feb	Mar	Apr	May	Jun	Jul	Aug	Sep	Total	%
Self-referral	700	529	619	565	554	769	773	867	770	804	760	808	8518	64%
Emergency services	190	178	193	203	166	158	222	196	201	218	225	179	2329	18%
General medical practitioner	84	72	90	108	62	82	76	84	95	73	70	65	961	7%
Work	59	41	36	36	34	67	28	46	23	47	25	41	483	4%
Other	32	25	23	25	24	43	35	31	28	37	31	34	368	3%
Educational establishment	41	28	16	14	12	24	16	25	21	12	0	22	231	2%
Health care provider	19	12	20	11	10	22	20	19	25	13	18	16	205	2%
Police	10	19	14	11	7	10	8	13	13	16	7	9	137	1%
Total	1135	904	1011	973	869	1175	1178	1281	1176	1220	1136	1174	13232	100%

Table 3: ED injury attendances by incident location and month, October 2013 to September 2014²

Incident location	Oct	Nov	Dec	Jan	Feb	Mar	Apr	May	Jun	Jul	Aug	Sep	Total	%
Home	486	366	512	463	415	495	527	568	514	524	492	474	5836	44%
Other	469	404	359	374	374	512	513	541	505	527	551	533	5662	43%
Public place	39	39	51	50	19	53	58	80	65	90	38	61	643	5%
Work	53	50	47	53	27	47	42	41	44	<50	<55	51	557	4%
Educational establishment	88	45	42	33	34	68	38	51	48	<35	***	55	534	4%
Total	1135	904	1011	973	869	1175	1178	1281	1176	1220	1136	1174	13232	100%

Table 4: ED injury attendances by discharge destination and month, October 2013 to September 2014^{2,3}

Discharge destination	Oct	Nov	Dec	Jan	Feb	Mar	Apr	May	Jun	Jul	Aug	Sep	Total	%
Discharged - no follow-up	584	487	524	515	531	680	643	683	629	648	626	681	7231	55%
Outpatient clinic	169	118	151	133	124	198	174	195	163	181	170	189	1965	15%
Admitted to hospital	120	150	139	171	121	128	167	148	172	150	150	122	1738	13%
Discharged - follow-up care by GP	146	69	59	56	38	82	93	113	102	118	75	66	1017	8%
Referred to ED clinic	57	42	58	32	21	32	42	47	45	35	36	56	503	4%
Referred to other health care professional	23	19	25	29	17	18	24	33	19	35	23	27	292	2%
Left department before being treated	12	6	26	12	5	12	13	32	22	24	17	12	193	1%
Other	11	7	18	12	8	12	11	18	17	21	23	13	171	1%
Transferred to other HCP	<15	***	<15	<10	***	<15	<10	10	7	8	16	8	107	1%
Left department having refused treatment	***	***	***	***	***	***	***	***	0	0	0	0	<15	0%
Died in department	0	0	0	0	0	0	0	***	0	0	0	0	***	0%
Total	1135	904	1011	973	869	1175	1178	1281	1176	1220	1136	1174	13232	100%

¹ 'Other' includes general dental practitioner and other.

² Please note that all numbers less than five have been suppressed (with ***) in line with patient confidentiality. If there is only one number less than five in a category then two numbers have been suppressed to prevent back calculations from totals.

Percentages may not add up to 100% due to rounding.

³ GP = General Practitioner; HCP = Health Care Provider.

ASSAULTS

Figure 3: ED assault attendances by gender and month, October 2013 to September 2014

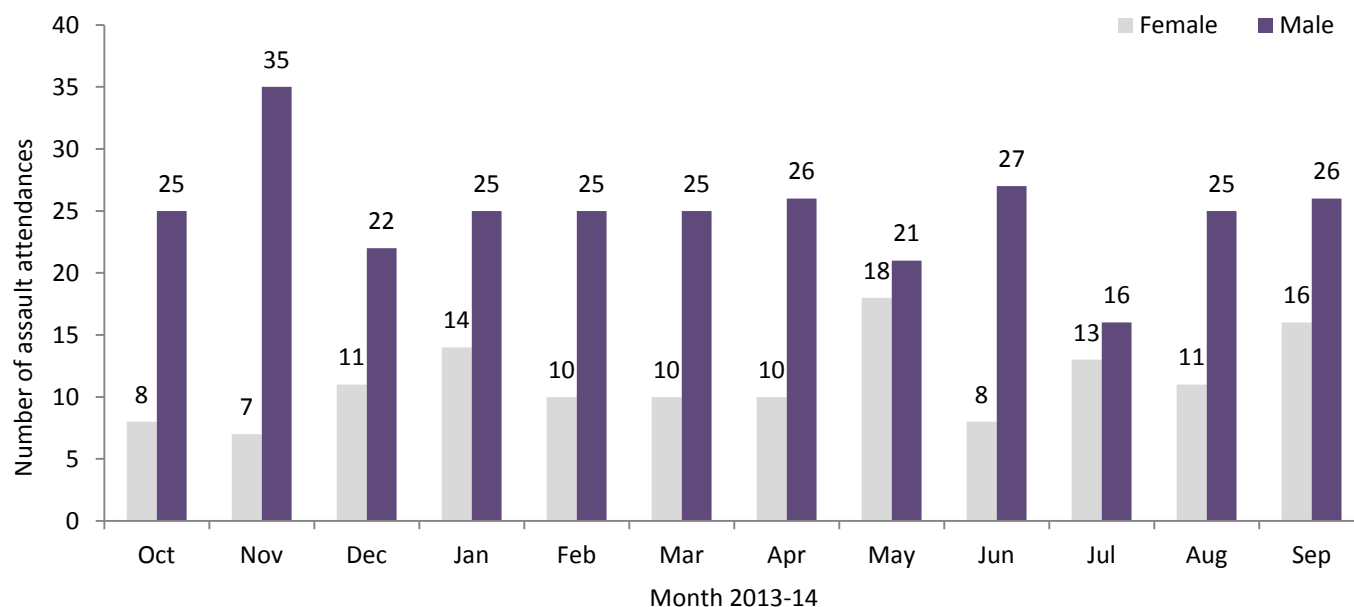


Table 5: ED assault attendances by age group and month, October 2013 to September 2014⁵⁴

Age group	Oct	Nov	Dec	Jan	Feb	Mar	Apr	May	Jun	Jul	Aug	Sep	Total	%
5-14	***	***	0	***	***	***	0	***	***	***	***	***	17	4%
15-29	17	25	20	21	15	25	19	20	17	13	14	24	230	53%
30-59	12	13	<15	<20	15	8	17	<20	16	14	20	14	173	40%
60 plus	***	***	***	0	***	***	0	0	***	***	***	***	14	3%
Total	33	42	33	39	35	35	36	39	35	29	36	42	434	100%

⁵ There were no assault attendances in the 0-4 years category.

Table 6: ED assault attendances by incident location and month, October 2013 to September 2014⁴

Incident location	Oct	Nov	Dec	Jan	Feb	Mar	Apr	May	Jun	Jul	Aug	Sep	Total	%
Other	24	28	20	22	26	21	26	23	27	22	29	26	294	68%
Home	5	6	6	7	6	***	5	8	***	***	***	9	66	15%
Public place	***	<10	7	7	***	5	5	8	***	***	***	***	51	12%
Educational establishment	***	***	0	***	***	***	0	0	***	***	0	0	14	3%
Work	0	0	0	***	0	***	0	0	***	0	0	***	9	2%
Total	33	42	33	39	35	35	36	39	35	29	36	42	434	100%

Table 7: ED assault attendances by disposal method and month, October 2013 to September 2014⁴

Disposal method	Oct	Nov	Dec	Jan	Feb	Mar	Apr	May	Jun	Jul	Aug	Sep	Total	%
Discharged	20	26	17	28	24	23	25	30	22	18	24	19	276	64%
Follow-up	10	10	11	6	6	6	***	***	9	<10	5	16	94	22%
Other	***	***	5	***	***	***	***	5	***	0	<10	<10	35	8%
Admitted	***	***	0	***	***	<10	***	***	***	***	***	***	29	7%
Total	33	42	33	39	35	35	36	39	35	29	36	42	434	100%

Published January 2015

Trauma and Injury Intelligence Group

Centre for Public Health, Faculty of Education, Health and Community, Liverpool John Moores University,

2nd Floor, Henry Cotton Building, Liverpool L3 2ET

T: 0151 231 4498 | E: tiig@ljmu.ac.uk | W: www.tiig.info and www.cph.org.uk | Twitter: [www.twitter.com/tiig_cph](https://twitter.com/tiig_cph)

⁴ Please note that all numbers less than five have been suppressed (with ***) in line with patient confidentiality. If there is only one number less than five in a category then two numbers have been suppressed to prevent back calculations from totals.

Percentages may not add up to 100% due to rounding.